

GRUPPO O.M.S. S.p.A

JV OMS POLICHEM

OMSTRAP

**OMSTRAP s.r.l. Produzione reggia
distribuzione macchine imballaggio
servizio assistenza e ricambi**

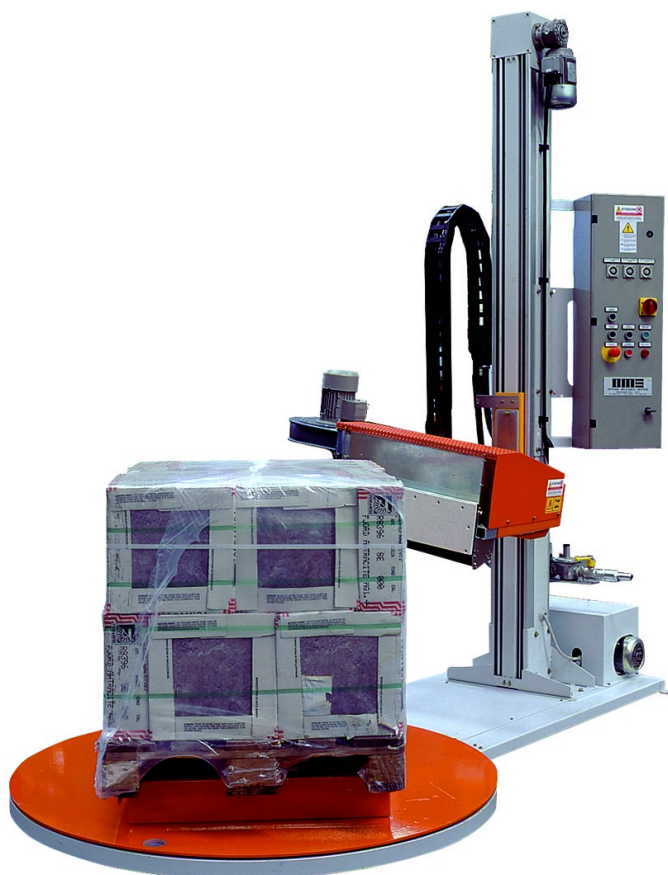
UPRIGHT THERMOSHRINKING OVEN Mod. FT 20

Characteristics:

- Hot air oven
- Burner up and down with inverter
- Table 1800 mm
- Rotation speed 8 rpm
- Max. capacity 2000 kg
- Pack height reading photocell

OPTIONAL: OVEN Mod. FT 20

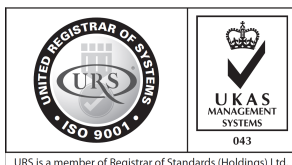
- Safety fences with safety photocell in the loading/unloading area
- Adjustment for column with H 2800 mm
- Adjustment for column with H 3200 mm
- Support frame for pallet (WARNING detailed pallet drawings required)



OMSTRAP s.r.l.

Capitale sociale int. Vers € 500.000
Reg. Imprese Novara
Cod. fisc. - P.I.V.A. 01931020034
R.E.A. N° 205309 C.C.I.A.A. Novara

Sede : Via Borgomanero, 44 – 28045 Paruzzaro (NO)
Tel. 0322 541498 - Fax 0322 230064
Stabilimento : Via Alfieri, 8 – 13876 Sandigliano (BI)
Tel. 015 691152 - Fax 015 691414
e-mail : omstrap@omsspa.com



The semi-automatic thermoshrinking oven with rotary table model FT 20 is a machine which uses a workstation to package products through thermoshrinking. The pack must be positioned on the rotary platform with the use of appropriate means and it can be easily centred thanks to the guides thereon. The machine thermoshrinks the film around the product which turns by means of a gas fed hot air generator. All automatic and manual use and maintenance functions are controlled by a PLC.

The burner is on board a carriage which slides along an extruded aluminium support column and is moved vertically by an inverter controlled gear motor.

It is possible to set three different times to optimise thermoshrinking:

- heating of the bottom of the pack
- cooling of the bottom of the pack
- heating of the upper part of the pack

Rotation always stops in the same place, thanks to a proximity switch, thus facilitating product loading and unloading operations.

OPERATING DESCRIPTION

After placing the product to be thermoshrunked on the table, the machine starts the thermoshrinking phase when the cycle start switch is turned: the hot air generator starts up and the table begins rotating. A flame control system with safety solenoid valves ensures perfect combustion by preventing unburned gas from leaking into the environment. The generator climbs up to the top of the pack (a photocell automatically detects its height), where it stops for a few seconds to finish thermoshrinking the upper part of the hood. The cycle ends when the generator switches off and the table stops rotating; the packaged product can now be removed.

MACHINE COMPOSITION

Base

Folded and painted metal structure that supports all machine parts, the accident-prevention guards and the electrical junction boxes for connection to the control panel.

Table capacity max. 2000 kg

Table diameter 1800 mm

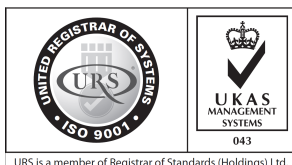
Standard pack height max. 1700 mm

Vertically movable thermoshrinker, controlled by a PLC-controlled motor, supported by strong chains. Holds the hot air burner, gas distribution and adjustment, electrical parts controlling gas ignition and flame control.

Hot air generator

Designed to operate with methane, butane or propane gas at a supply pressure of 200 mbar (2000 mm water column), with 3/4" piping; switching from one type of fuel to another only requires a simple initial adjustment. It is made of galvanised sheet metal, except for the parts in contact with the flame that are in stainless steel for high temperatures. The burner is fitted with a fan for combustion air, a safety air pressure switch, a gas solenoid valve, a high voltage transformer, a spark plug, a flame sensor and a gas pressure and flow adjustment system. The machine is also equipped with a gas safety ramp in compliance with EC regulations, an inlet filter, a main pressure reducer, a minimum gas pressure switch and a gas supply hose.

Electrical panel



OMSTRAP

**OMSTRAP s.r.l. Produzione reggia
distribuzione macchine imballaggio
servizio assistenza e ricambi**

GRUPPO O.M.S. S.p.A

JV OMS POLICHEM

Contains all of the machine's power and control devices, as well as the push-button control panel. It is made of painted metal, with modular removable panels and front-opening door.

Power supply 400 V – 50 Hz three-phase + earth + neutral

Max. installed power 2 kW

Energy consumption

Methane gas: 0.055 Nm³ every 60 seconds of ignition

PLC: OMRON CP1E

OPERATOR PANEL: OMRON NQ

POWER SUPPLY SPECIFICATIONS OVEN MOD. FT20

1) Gas pressure (methane or propane) : 0.2 bar - equal to 200 mmbar - equal to 2000 mm water column +/- 20%
Pressure at connection point

2) Methane gas flow : 10 m³/h with 3/4" oven connection

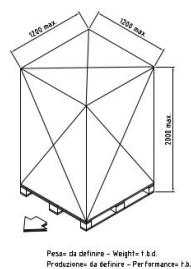
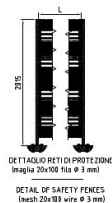
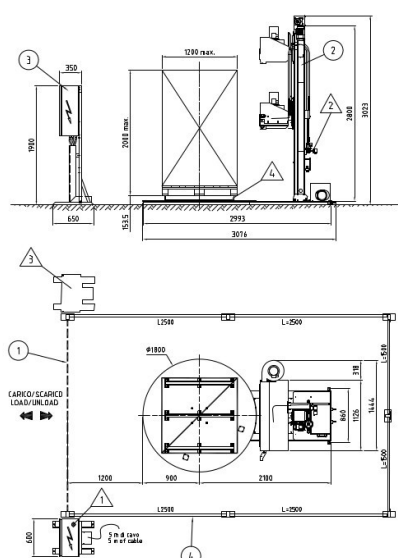
3) Propane gas flow : 4 m³/h with 3/4" oven connection

4) Methane consumption : 0.5 m³ for 1 m³ pack

5) Propane consumption : 0.22 m³ for 1 m³ pack

6) Electrical supply : 400 Volt three-phase + neutral, 50 Hz – installed power 1.2 kw

EXAMPLE OF DEDICATED MACHINE WITH SAFETY FENCES



- 4) Telaio appoggio pallet - OPZIONE (da definire in base alla forma del pallet)
Support frame for pallet - OPTIONAL (to be defined accordingly to pallet shape)
- 3) Posizione alternativa del pannello di controllo
Alternative position of control panel
- 2) Attacco gas 3/4"
Gas connection 3/4"
- 1) Alimentazione elettrica
Power supply

IL PRESENTE LAY-OUT È PURAMENTE INDICATIVO E NON VINCOLANTE.
VENIR RILASCIATO ESCLUSIVAMENTE PER UNA VALUTAZIONE PRELIMINARE D'INGEGNERIA.
IN OGNI CASO OMS SI RISERVA L'ESPRESSIONE DI UNA REVISIONE DEFINITIVA SOLO DOPO AVERE CONSTATO L'ESATTA APPLICAZIONE DELLA MACCHINA.

THIS IS AN INDICATIVE LAY-OUT ONLY FOR A PRELIMINARY VALUATION OF THE
OVERALL DIMENSIONS. ANYWAY OMS WILL ISSUE A DEFINITIVE REVISION ONLY
UPON RECEIPT OF THE EXACT APPLICATION OF THE PLC.

OMS reserves the right of introducing modifications with the intent of improving the declared performance.
OMS si riserva il diritto di introdurre modifiche allo scopo di migliorare le prestazioni dichiarate.

OMSTRAP s.r.l.

Capitale sociale int. Vers € 500.000
Reg. Imprese Novara
Cod. fisc. - P.I.V.A. 01931020034
R.E.A. N° 205309 C.C.I.A.A. Novara

Sede : Via Borgomanero, 44 – 28045 Paruzzaro (NO)
Tel. 0322 541498 - Fax 0322 230064
Stabilimento : Via Alfieri, 8 – 13876 Sandigliano (BI)
Tel. 015 691152 - Fax 015 691414
e-mail : omstrap@omsspa.com