

# OMSTRAP

**OMSTRAP s.r.l. Produzione reggia  
distribuzione macchine imballaggio  
servizio assistenza e ricambi**

GRUPPO O.M.S. S.p.A

**JV OMS POLICHEM**

## UPRIGHT THERMOSHRINKING OVEN Mod. FT 20 AUTO

### Characteristics:

- Hot air oven
- Burner up and down with inverter with mobile ramp
- Table 1800 mm
- Rotation speed 8 RPM
- Max. capacity 2000 kg
- Pack height reading photocell

### OPTIONAL: OVEN Mod. FT 20 AUTO

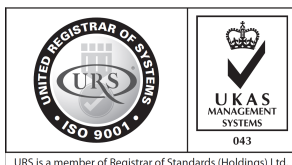
- Safety fences with safety photocell in the loading/unloading area



**OMSTRAP s.r.l.**

Capitale sociale int. Vers € 500.000  
Reg. Imprese Novara  
Cod. fisc. - P.I.V.A. 01931020034  
R.E.A. N° 205309 C.C.I.A.A. Novara

Sede : Via Borgomanero, 44 – 28045 Paruzzaro ( NO )  
Tel. 0322 541498 - Fax 0322 230064  
Stabilimento : Via Alfieri, 8 – 13876 Sandigliano ( BI )  
Tel. 015 691152 - Fax 015 691414  
e-mail : omstrap@omsspa.com



GRUPPO O.M.S. S.p.A

JV OMS POLICHEM

# OMSTRAP

**OMSTRAP s.r.l. Produzione reggia  
distribuzione macchine imballaggio  
servizio assistenza e ricambi**

The semi-automatic thermoshrinking oven model FT20AUTO is a machine which uses a workstation to package products through thermoshrinking. The pack must be positioned on the rotary platform with the use of appropriate means and it can be easily centred thanks to the guides thereon.

The machine thermoshrinks the film around the product which turns by means of a gas fed hot air generator. The cycle is controlled by a PLC with all automatic and manual use and maintenance functions.

The burner is on board a carriage which slides along an extruded aluminium support column, its vertical movement is controlled by an inverter controlled gear motor.

Three different times can be set to optimise thermoshrinking: heating of the bottom of the pack, cooling of the bottom of the pack and heating of the upper part of the pack.

Rotation always stops in the same place, thanks to a proximity switch, thus facilitating product loading and unloading operations.

It differs from the semi-automatic version as follows:

- During rotation the burner's ramp remains at a constant distance from the pallet
- The ramp is equipped with a pneumatic cylinder which allows it to turn and to bring it from the inclined to the horizontal position
- Thanks to the use of a PLC and a touch panel it is possible to optimize the cycles and to rely on excellent diagnostics.

## OPERATING DESCRIPTION

After placing the product to be thermoshrunked on the table, the machine starts the thermoshrinking phase when the cycle start switch is turned. The generator starts up, a flame control system with safety solenoid valves ensures perfect combustion by preventing unburned gas from leaking into the environment, and the table begins rotating. The generator climbs up to the top of the pack, a photocell automatically detects its height, where it stops for a few seconds to thermoshrink the upper part of the hood. The cycle ends when the generator switches off and the table stops rotating, the thermoshrunked pack can now be removed.

## MACHINE COMPOSITION

### Base

Folded and painted metal structure that supports all machine parts, the accident-prevention guards and the electrical junction boxes for connection to the control panel.

Table capacity max. 2000 kg

Table diameter 1800 mm for 1200x1200 mm pallets

**Burner up and down with mobile ramp**

### Thermoshrinker

Vertically movable, controlled by a PLC-controlled motor, supported by strong chains. Holds the hot air burner, gas distribution and adjustment, electrical parts controlling gas ignition and flame control.

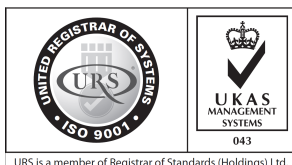
### Hot air generator

Designed to operate with methane, butane or propane gas at a supply pressure of 200 mbar with 3/4" piping (2000 mm water column) requesting a simple initial adjustment to switch from one type of fuel

**OMSTRAP s.r.l.**

Capitale sociale int. Vers € 500.000  
Reg. Imprese Novara  
Cod. fisc. - P.I.V.A. 01931020034  
R.E.A. N° 205309 C.C.I.A.A. Novara

Sede : Via Borgomanero, 44 – 28045 Paruzzaro ( NO )  
Tel. 0322 541498 - Fax 0322 230064  
Stabilimento : Via Alfieri, 8 – 13876 Sandigliano ( BI )  
Tel. 015 691152 - Fax 015 691414  
e-mail : omstrap@omsspa.com



# OMSTRAP

**OMSTRAP s.r.l. Produzione reggia  
distribuzione macchine imballaggio  
servizio assistenza e ricambi**

GRUPPO O.M.S. S.p.A

## JV OMS POLICHEM

to another. They are made of galvanised sheet metal, with the parts in contact with the flame in AISI 430 steel. Each burner is fitted with a fan for combustion air, a safety air pressure switch, a gas solenoid valve, a high voltage transformer, a spark plug, a flame sensor and a gas pressure and flow adjustment system. The machine is also equipped with a gas safety ramp in compliance with EC regulations, an inlet filter, a main pressure reducer, a minimum gas pressure switch and a gas supply hose.

### Electrical panel

Contains all of the machine's power and control devices, as well as the push-button control panel. It is made of painted metal, with modular removable panels and front-opening door.

Power supply 400V 50Hz three-phase + earth + neutral

Max. installed power 2 kW

### Energy consumption

Methane gas: 0.055 Nm<sup>3</sup> every 60 seconds of ignition

With regards safety and health protection, machines manufactured by OMS meet the requirements of Machinery Directive 98/37/EC.

All electrical devices meet the requirements of Standard EN60204 - 1 (09/93).

### OPTIONAL

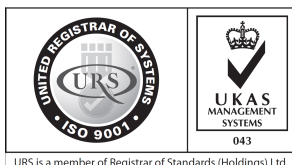
Support frame for pallet

Note: if requested, detailed pallet drawings must be provided

## POWER SUPPLY SPECIFICATIONS OVEN MOD. FT20

- 1) Gas pressure (methane or propane) : 0.2 bar - equal to 200 mmbar - equal to 2000 mm water column +/- 20%  
Pressure at connection point
- 2) Methane gas flow : 10 m<sup>3</sup>/h with 3/4" oven connection
- 3) Propane gas flow : 4 m<sup>3</sup>/h with 3/4" oven connection
- 4) Methane consumption : 0.5 m<sup>3</sup> for 1 m<sup>3</sup> pack
- 5) Propane consumption : 0.22 m<sup>3</sup> for 1 m<sup>3</sup> pack
- 6) Electrical supply : 400 Volt three-phase + neutral, 50 Hz - installed power 1.2 kw

**OMSTRAP s.r.l.**



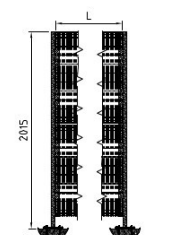
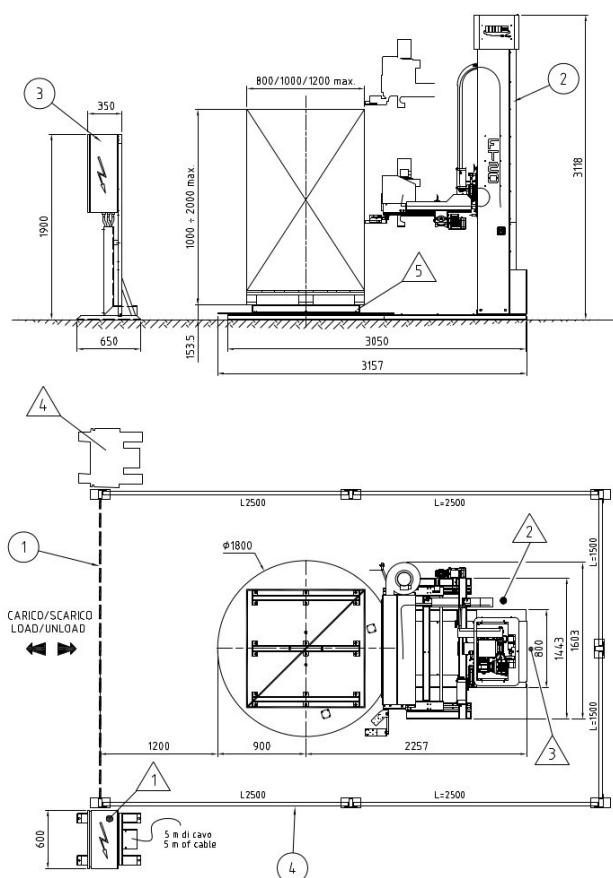
# OMSTRAP

**OMSTRAP s.r.l. Produzione reggia  
distribuzione macchine imballaggio  
servizio assistenza e ricambi**

GRUPPO O.M.S. S.p.A

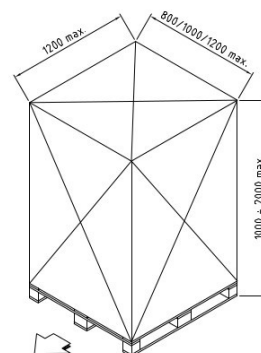
JV OMS POLICHEM

## EXAMPLE OF DEDICATED MACHINE WITH SAFETY FENCES



DETTAGLIO RETI DI PROTEZIONE  
(maglia 20x100 filo Ø 3 mm)

DETAIL OF SAFETY FENCES  
(mesh 20x100 wire Ø 3 mm)



Peso= da definire - Weight= t.b.d.  
Produzione= da definire - Performance= t.b.d.

- 5 Telaio appoggio pallet - OPZIONE (da definire in base alla forma del pallet)  
Support frame for pallet - OPTIONAL (to be defined accordingly to pallet shape)
- 4 Posizione alternativa del pulpito di controllo  
Alternative position of control panel
- 3 Aria compressa 1/4" 5 - 7 bar  
Compressed air 1/4" 5 - 7 bar
- 2 Attacco gas 3/4"  
Gas connection 3/4"
- 1 Alimentazione elettrica  
Power supply

IL PRESENTE LAY-OUT E' PURAMENTE INDICATIVO E QUINDI NON VINCOLANTE.  
VIENE RILASCIATO ESCLUSIVAMENTE PER UNA VALUTAZIONE PRELIMINARE DI INGOMBRO.  
IN OGNI CASO OMS SI RISERVA L'EMISSIONE DI UNA REVISIONE DEFINITIVA SOLO DOPO  
AVER CONOSCIUTO L'ESATTA APPLICAZIONE DELLA MACCHINA.

THIS IS AN INDICATIVE LAY-OUT, ONLY FOR A PRELIMINARY VALUATION OF THE  
OVERALL DIMENSIONS. ANYWAY OMS WILL ISSUE A DEFINITIVE REVISION ONLY  
UPON RECEIPT OF THE EXACT APPLICATION OF THE M/C.

**OMSTRAP s.r.l.**

Capitale sociale int. Vers € 500.000  
Reg. Imprese Novara  
Cod. fisc. - P.I.V.A. 01931020034  
R.E.A. N° 205309 C.C.I.A.A. Novara

Sede : Via Borgomanero, 44 - 28045 Paruzzaro ( NO )  
Tel. 0322 541498 - Fax 0322 230064  
Stabilimento : Via Alfieri, 8 - 13876 Sandigliano ( BI )  
Tel. 015 691152 - Fax 015 691414  
e-mail : omstrap@omsspa.com